

Tecnik' s series UNICON 8000 Butterfly Valve designed for throttling & on-off flow. Butterfly valves allow high flows due to relatively low pressure loss from the valves.

### APPLICATION:

- Power generation industry.
- Swimming pool technology.
- Chemical, petrochemical, oil & gas industry.
- Food industry.
- Materials handling technology.
- Gas control equipment.
- Shipbuilding.
- Seawater desalination.
- Construction services & automation.
- Water and wastewater technology.

### KEY FEATURES:

- Double offset design results in low operating torque and long service life and reliability.
- Low & easy maintenance.
- Long life
- Better leakage trap

### PRODUCT SPECIFICATION:

- Valve Size : NPS 2" to 16" (50 to 400NB)
- Body Rating : ASME B16.5, CLASS 150#
- Leakage Class : VI ( Soft Seated )
- Flow Characteristics : Throttling, ON-OFF
- Temperature Range : -25 °C to + 220 °C
- End Connection : Wafer Type

### DESIGN STANDARD:

- Design Standard : BS EN 593:2004 / BS 5351
- Testing Standard : BS EN 12266-1 & 2 (2003) / API 598
- Face to Face : API 609 (Table No. 1 )
- Top Flange : ISO 5211
- Flange Fitting : ANSI B16.5, 150#

### DESIGN FLEXIBILITY:

- Can be operated by manual, electric, pneumatic or hydraulic actuators.
- Every valve has a mounting flange according to ISO 5211 which simplifies the mounting of any actuator built to this standard.
- Full range of body and disc material options, with availability of hard facing.
- More compact than globe valve.
- Lighter in weight due to the compact design.
- High flow co-efficient.

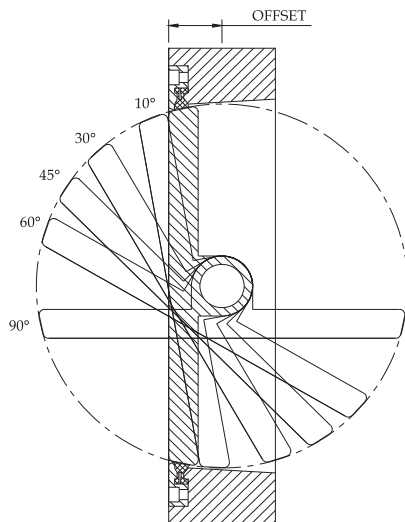


### SEAT DESIGN FLEXIBILITY:

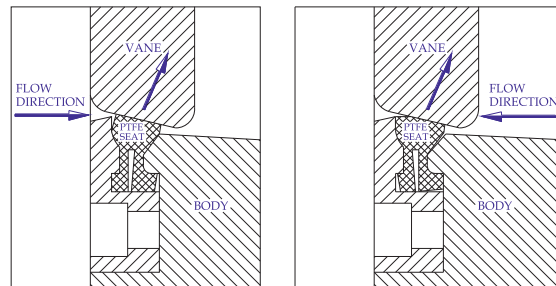
- Flexible PTFE

### GLAND PACKING:

- Low fugitive emission gland packing.
- In house helium leak test available on request.



**OFFSET DESIGN INDICATING POSITIONS OF VALVE OPENING**



**SEALING DESIGN IN BOTH FLOW DIRECTIONS**

### PAD DETAILS:

- Top flange butterfly valves are designed as per EN ISO 5211 for direct mounting of actuators and gear operators. Top flange design provides easy access for adjustment of gland bolts when the butterfly valve is mounted with actuators.
- Body joint bolting is in ASTM A193 B7 / ASTM A194 2H material for carbon steel bodies and ASTM A193 B8 / ASTM A194 8 material for stainless steel bodies.

### ACTUATOR TYPE:

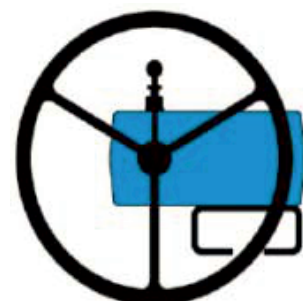
- Rack and pinion type
- Single and double acting
- Pneumatic diaphragm type

### ACCESSORIES:

- Pneumatic valve positioner
- Electro - Pneumatic valve positioner
- Air filter regulator
- Solenoid valve
- Limit switches
- Side mounted handwheel
- Other accessories available on request

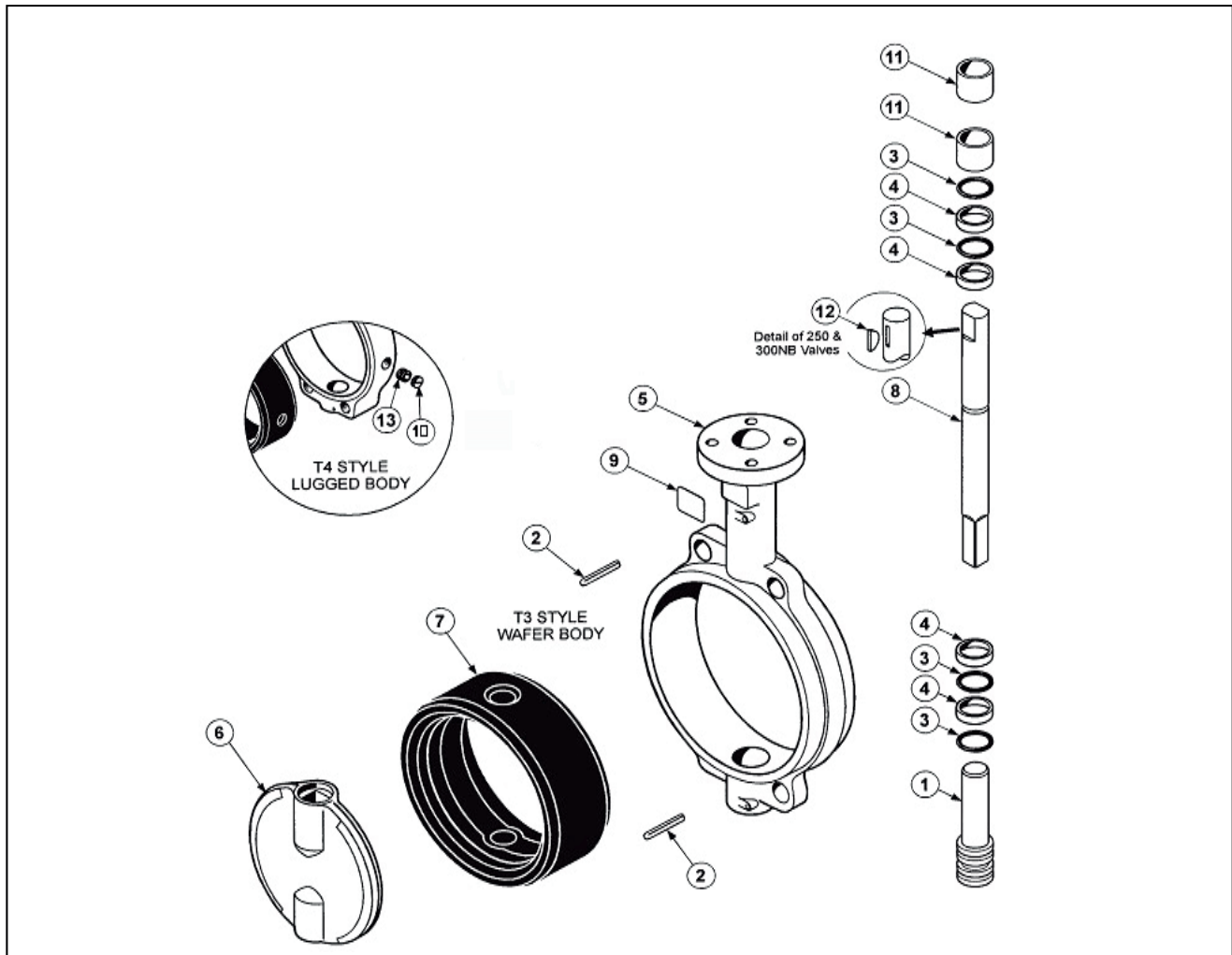


**Limit Switch**



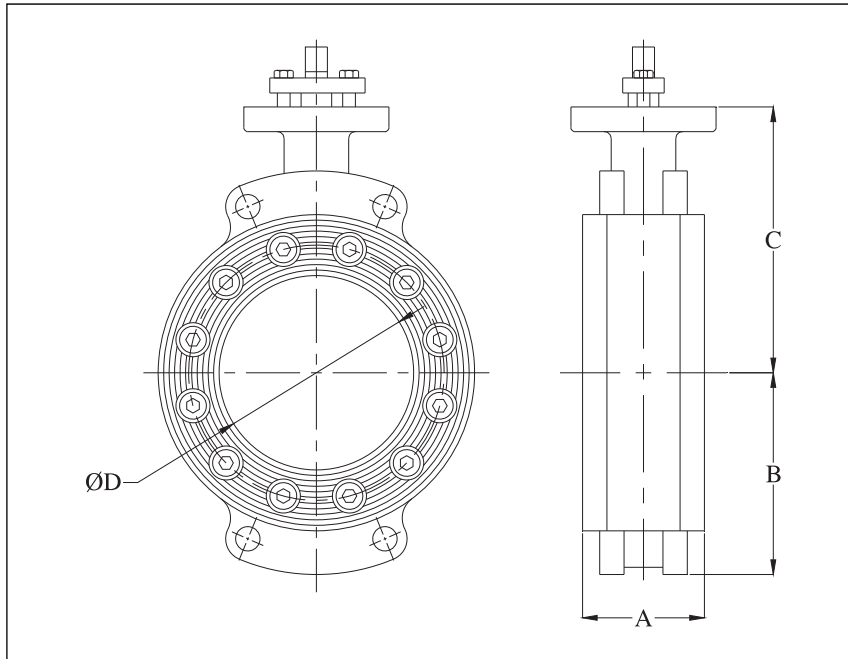
**Gear Box Operated**

### PART LIST:



PART NO.	PART NAME	QTY.	PART NO.	PART NAME	QTY.
1	LOWER STEM	1	8	UPPER STEM	1
2	STEM RETAINING PIN	2	9	NAME PLATE	1
3	'O' RING	6	10	PLUG SCREW [LUGGED VALVES ONLY]	2-6
4	SMALL STEM BUSH	4			
5	BODY	1	11	LARGE STEM BUSH	2
6	DISC	1	12	STEM DRIVE KEY	1
7	SEAT	1	13	SEAT RETAINING SCREW LUGGED VALVES ONLY	2-6

**DIMENSIONS:**



VALVE SIZE		A ± 3	Ø D ± 2	B ± 20	C ± 20
[in]	[mm]				
2"	DN 50	43	50	60	105
3"	DN 80	48	76	75	140
4"	DN 100	54	100	90	150
6"	DN 150	57	150	130	170
8"	DN 200	64	200	155	200
10"	DN 250	71	240	195	265
12"	DN 300	81	291	220	295
14"	DN 350	92	412	260	300
16"	DN 400	102	472	290	310

All dimensions are in 'mm'.