

# UNICON 4000L



## LINED BALL VALVE

Tecnik's series UNICON 4000L lined ball valves are ideally suited for corrosive application, requiring reliable performance, tight shut-off, constant torque and no maintenance. The valves successfully handle a multitude of corrosive application in industries such as chemical, petro-chemical, pharmaceutical, pulp and paper, foundries and mining like sulphuric acid, etc.

## APPLICATION :

- Highly corrosive fluids such as:Hydrochloric acid and sulphuric acid.
- Nitric acid and phosphoric acid.
- Adhesives, paper industry and fuel transport.
- Wet and dry chlorine.
- Chlorine production and ore processing.
- Semi-conductor application.

## KEY FEATURES :

- High quality PFA lining materials cover a wide range of corrosive applications.
- Full bore offers high Cv value equal to the pipe.
- Bubble tight shut-off precision machined ball and seats.
- The self adjusting packing is maintenance free and helps provide a leak-free stem seal.
- Specific anti blow-out shaft design which cannot be affected by the media according to API 609.
- PFA lining offers highest corrosion resistance.
- One piece ball / stem helps eliminate possibility of damaging PFA lining on ball by the stem, no hysteresis,Ideal for flow control application.
- Direct mounting according to ISO 5211.

## PRODUCT SPECIFICATION:

Valve Size	: NPS 1/2 " to 8"
Body Rating	: ANSI 150# CLASS
Leakage Class	: VI ( Soft Seated )
Flow Characteristics	: ON-OFF, Throttling
Temperature Range	: -30°C to 180°C
End Connection	: Flanged Type



# UNICON 4000L



## DESIGN STANDARDS:

- Design Standard : BS EN ISO 17292:2004 / BS 5351
- Testing Standard : EN 12266-1 & 2 (2003) / API 598
- Face to Face : ASME B 16.10, DIN/EN 558-1 ( See Table No. 1 )
- Top Flange : ISO 5211
- Flange Fitting : ASME B 16.5, 150# CLASS RF Flange

## LINING SPECIFICATION :

- Lining Thickness : 3.0 to 5.0mm
- Spark Test : 15 KVDC
- Lining Material : PFA
- Service Temperature : Max. 200 °C
- A variety of other liner material including FEP, PP, ETFE are available as per the requirements.

## DESIGN FLEXIBILITY :

- Full bore design resulting in high Cv value, especially required when high viscosity liquids have to be controlled.
- Every valve has a mounting flange according to ISO 5211 which simplifies the mounting of any actuator built to this standard.
- A set of belleville disc spring exert uniform loading on the packing, resulting in a maintenance free.
- Full proof anti blow-out shaft design, located in the dry area of the valve and therefore unaffected by the media.
- Locked in energized seats ensure both upstream and downstream bubble tight sealing, constant operating torque and extended service life versus a floating ball seat design which depends on differential pressure for sealing .
- Flexible and corrosion resistant virgin PTFE packing ensures a leak free stem seal.
- One piece trunnion mounted ball / stem ensures uniform support of the ball. The energized seats keep in constant contact with the ball under all operating condition. Wear and tear on the seats is reduced, resulting in an increased operating life.
- Body joint bolting is in ASTM A 193 B7 / ASTM A 194 2H material For Carbon Steel bodies and ASTM A 193 Gr. B8 / ASTM A 194 Gr. 8 material for stainless steel bodies.

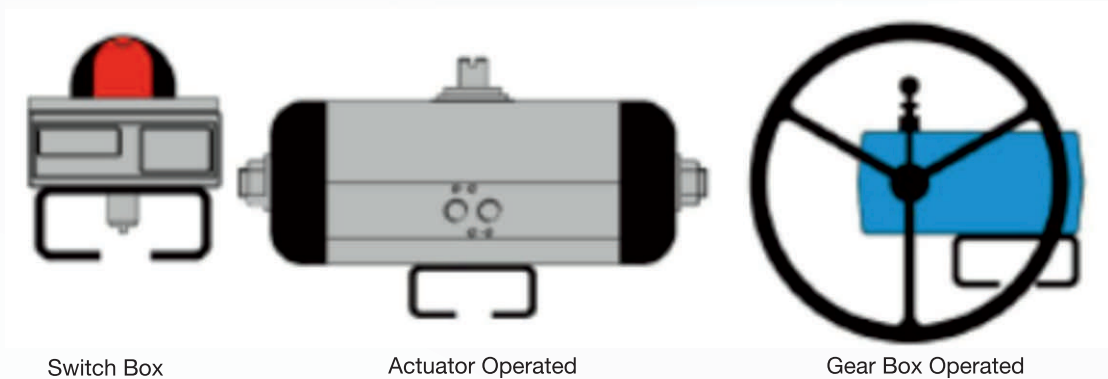


# UNICON 4000L



## ACTUATOR TYPE :

- Rack & Pinion Type
- Single & Double Acting Type
- Pneumatic Diaphragm Actuator



Switch Box

Actuator Operated

Gear Box Operated

## ACCESSORIES:

- Pneumatic Valve Positioner
- Electro Pneumatic Valve Positioner
- Air Filter Regulator
- Solenoid Valve
- Limit Switches
- Proximity Switches
- Side Mounted Handwheel
- Other accessories available on request

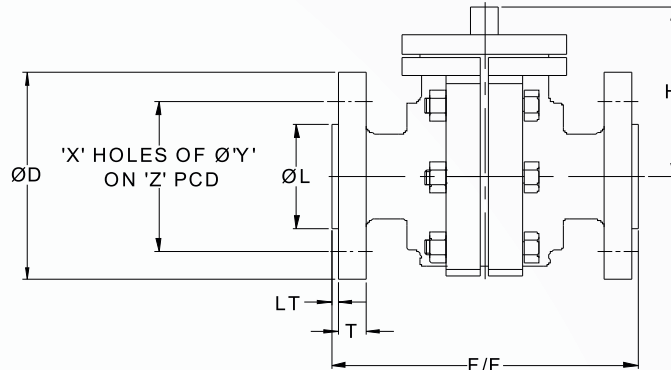


TABLE NO. 1

SIZE		DIMENSIONS FOR 150# CLASS								
INCH	DN	F/F ± 2	H ± 10	ØD ± 1	T	ØL ± 1	LT	X	ØY ± 1	Z ± 1
1/2	15	108	90	89	10	35	3	4	16	60.3
3/4	20	117	90	98	10	43	3	4	16	69.8
1	25	127	95	108	13	51	3	4	16	79.4
1½	40	165	105	127	16	73	3.5	4	16	98.4
2	50	178	123	152	18.5	92	4	4	19	120.6
2½	65	190	150	178	18.5	105	4	4	19	139.7
3	80	203	175	191	20.5	127	4.5	4	19	152.4
4	100	229	195	229	22.5	157	4.5	8	19	190.5
6	150	267	225	279	24	216	5	8	22	241.3
8	200	457	275	343	26	270	5	8	22	298.4





## TECNIK VALVES PVT. LTD.

**Corporate Office :**  
C-519, 215 Atrium,  
Andheri Kurla Road,  
Chakala, Andheri (East),  
Mumbai - 400 093 (India)  
Tel : +91-022-49733100/101/102  
+91 9619631307

**Factory Address :**  
W-125, MIDC Boisar,  
Dist. Palghar – 401 506 (india)  
Tel No. : +91-02525-661028  
+91-8446045473

Email : [sales@tecnik.in](mailto:sales@tecnik.in) / [www.tecnikvalves.com](http://www.tecnikvalves.com)

CE<sub>1354</sub>

FEB/2024